



5 Warehouse Productivity Tips for Reducing Downtime

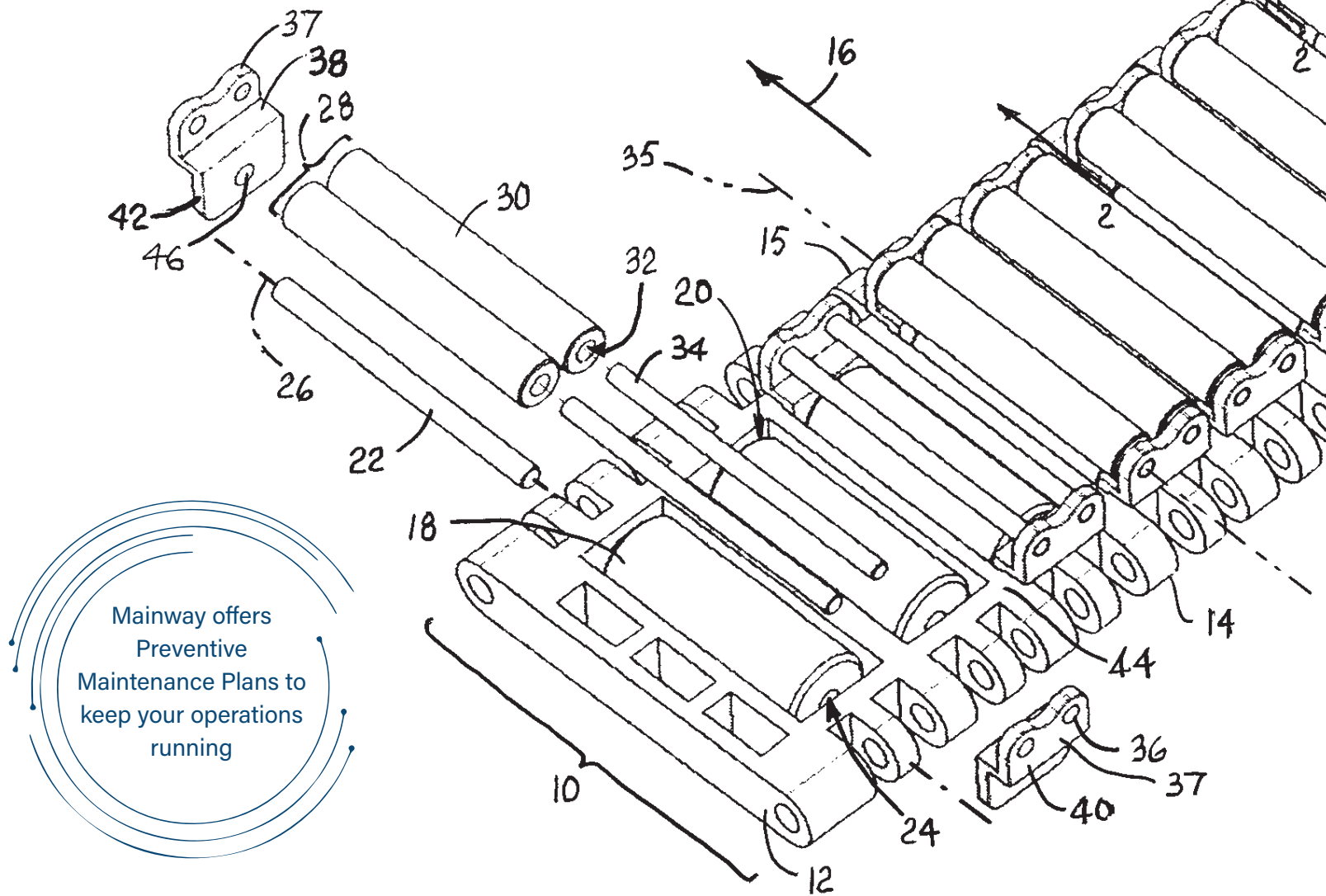
*As Integrators we can Design, Build,
Install & Maintain any System
needed for your Operations*





If you are a warehouse manager, you would know that handling warehouse operations is not an easy task. It is important to constantly implement ways to optimize the processes and improve the operational effectiveness of the warehouse. Minimizing downtime and increasing productivity are two things that rank high on a warehouse manager's to-do list.

**Here are 5 effective warehouse
productivity tips to
help you reduce downtime
immediately**

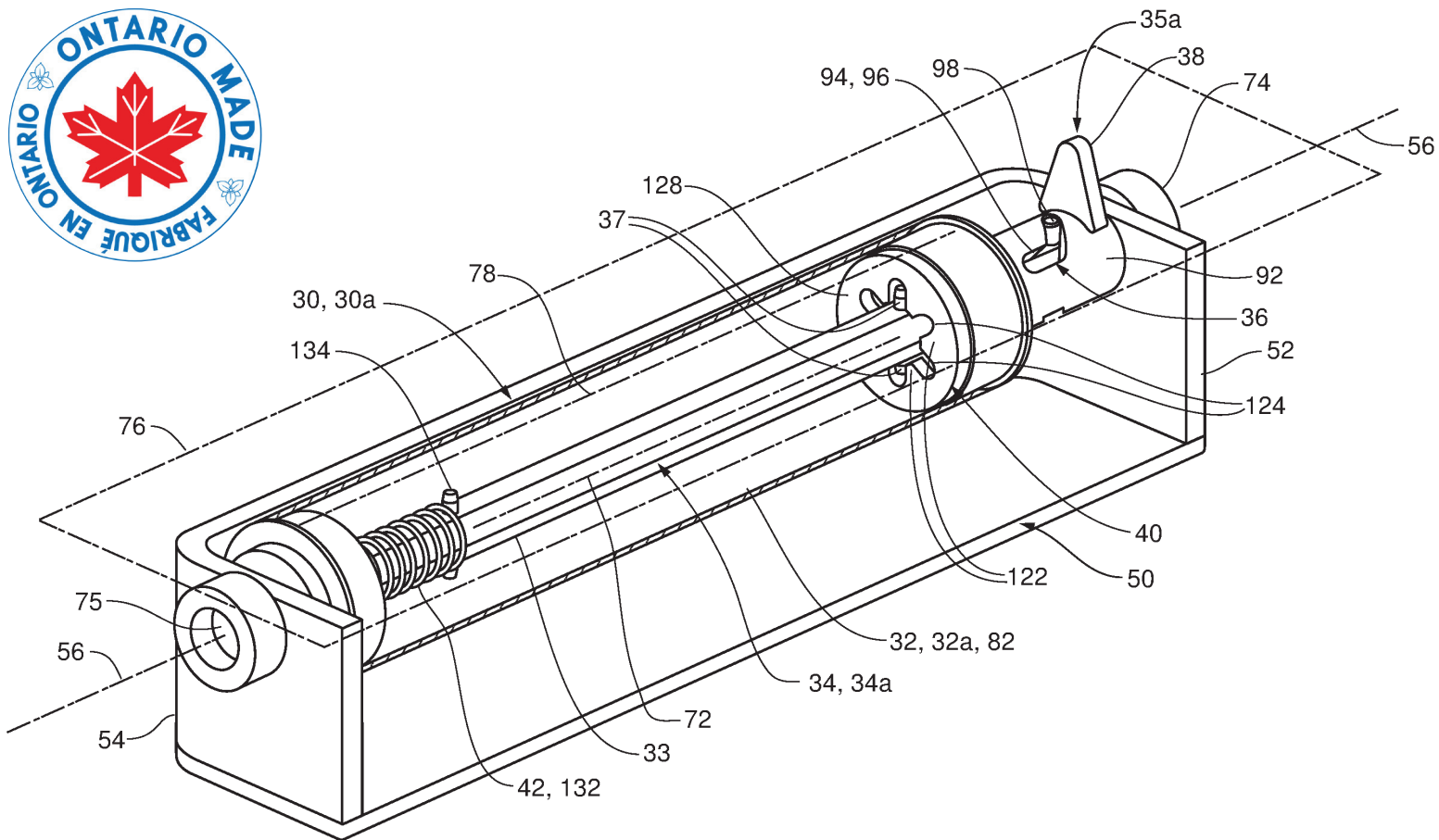


Plan an Efficient Layout for the Warehouse

Warehouse efficiency directly depends on its layout. Arrange your inventory based on how often you need to use it. If you use certain items frequently, keep them closer to the working or shipping area. Those used less frequently can take up the spaces in the back. It's also important to remember that a well-organized layout can get disorganized quite quickly, so ensure that the layout is maintained at all times. The right layout will also help in minimizing safety hazards.

Focus on the Maintenance of Your Equipment

Regular maintenance of the equipment will prolong their life. Replace the outdated machines as they will slow down processes and increase the overall costs due to decreased efficiency. Constantly servicing machines that need replacement won't do any good. It is better to install new equipment in such cases.



Schedule Maintenance Plans

Machines will break down at some point. If you are not ready for such an event, the downtime will increase. By scheduling maintenance plans, you can ensure that the machines are serviced regularly. When you implement strict inspections and maintenance plans, you can identify problems before they become too serious.

Standardize the Processes

By standardizing various warehouse processes, you can manage the loading and unloading of the products more efficiently across the warehouse. Further, downtime and inefficiencies will reduce.

Embrace Relevant Technology

Use automatic identification such as barcode labels, RFID, etc., on products being stored in the warehouse. By adopting software solutions for automating identification, you can decrease the time taken to identify various relevant types of equipment, elevate inventory accuracy and increase overall productivity. It will also help in identifying the items you have in the warehouse, their quantities, and exact locations. With the costs of software going down, investing in them is a good idea.



Since 1988, Mainway has been providing clients with an unprecedented standard of excellence in conveyor design, material handling and systems integration. Our experienced team delivers leading-edge customizable solutions, embracing technology advancements to produce exceptional end results.

Mainway Handling Systems
Email: sales@mainwayhandling.com
Phone: 905.335.0133

