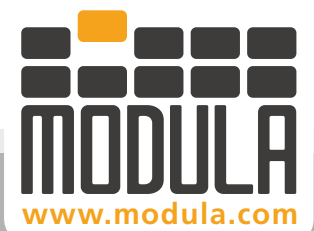




Modula OnePick

Think Vertical, Think Modula

OUR PRODUCTS ARE
★ **MADE IN USA** ★
From US & Imported Components



Are you looking for more from a vertical warehouse?

Sophistication in Automation

OnePick is the Vertical Lift Module that works without an operator thanks to the fully automated picking bay.

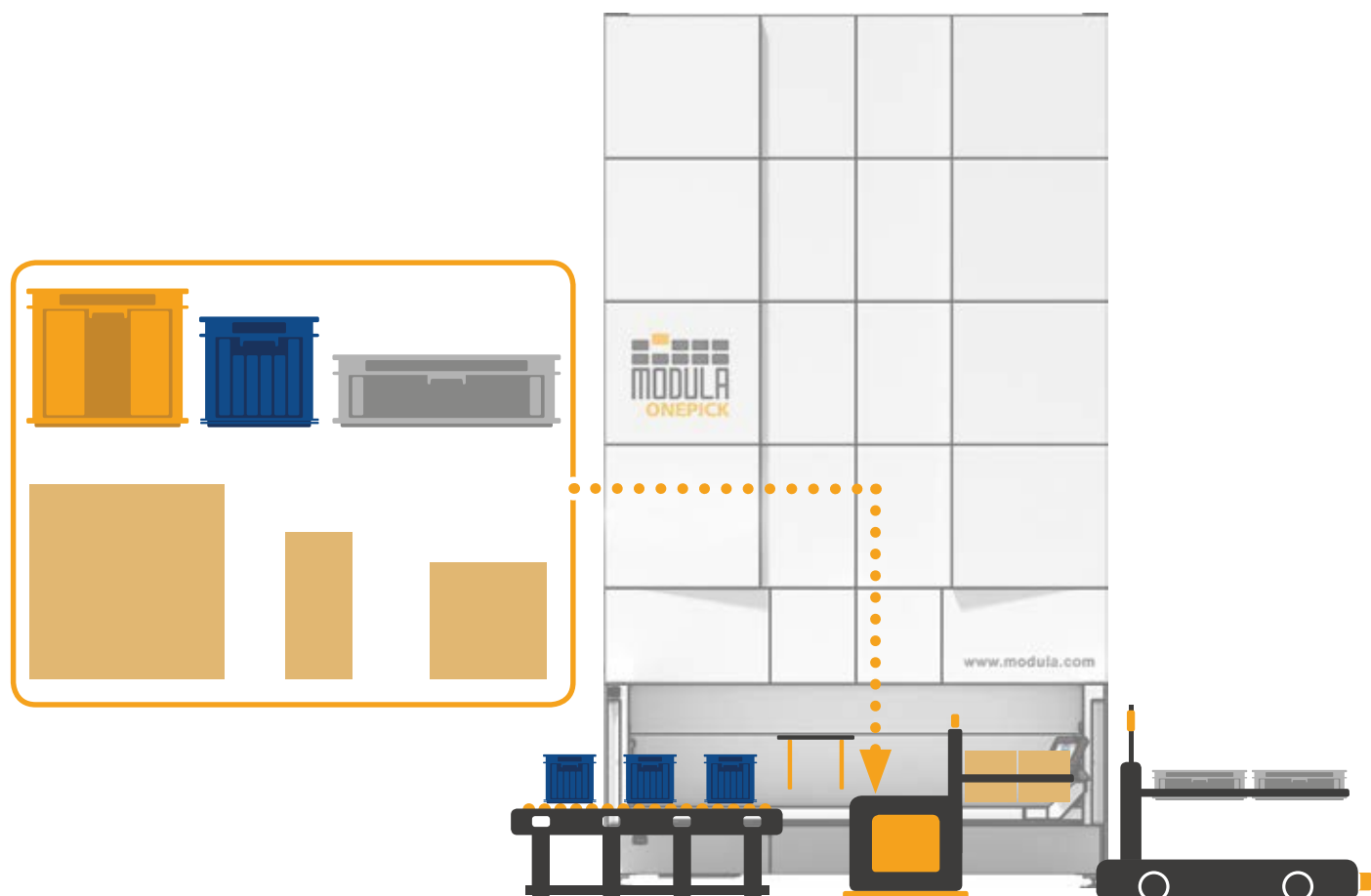
OnePick seamlessly integrates with material handling systems such as conveyor belts, rollers, AGVs, AGCs, making the picking operations fully automated and safe.

Thanks to its specially designed extractor, it handles

the products stored in boxes or bins without the aid of operators, antropomorphic robots or other external handling systems.

OnePick is the ideal system for stocking in the same warehouse boxes, bins and containers with:

- Different weights
- Different volumes
- Different sizes
- Different dimensions



What it is and how it works

OnePick is a Modula Lift (VLM) with a special picking bay equipped with a 2 axis (X & Y) extractor combined with a Z axis provided by the lift platform.

The bay has a set unit access height to easily integrate with rollers, conveyors, belts or similar systems.

In the OnePick bay, an extractor device retrieves the item and places it in front of the unit or on an external surface.

Like a Modula Lift, Modula OnePick

- Saves floor space
- Stores items safely
- Automatically manages inventory
- Tracks items
- Saves picking time
- Reduce delivery and picking errors



Technical features

- Unit height: from 130" (3,300 mm) to 634" (16,100 mm)
- Unit height increment: 7.87" (200 mm)
- Tray storage pitch: 1"
- Tray widths: from 74.8" (1,900 mm) to 161.41" (4,100 mm)
- Tray depths: 25.75" (654 mm) & 33.74" (857 mm)
- Net tray payload options: 551 - 1102 - 1653 - 2182 lbs (250-500-750-990 kg)
- Total net payload: up to 198,416 lbs (90,000 Kg)
- Number of bays: up to 3 internal or external
- Load-bearing structure in zinc-coated steel
- Eagle steel-reinforced toothed belt transmission
- Elevator guiding system with 6 HDPE rollers per side
- Multiple payload tray management

Maximum load per item picked:
14.17" (360 mm)

Maximum weight per item picked:
55 lbs (25 Kg)
(depending on the container dimensions)

Option for dual access bays
Dynamic tray height storage

Reclaim valuable space

Retrieval from multiple rows

The OnePick warehouse retrieves from multiple rows in the same tray. An advanced system synchronizes the extractor device and the tray movements. This makes box retrieval extremely precise, even when the tray has a random geometric layout and/or on more than one row.

No matter what the tray layout is, it is perfectly reachable. OnePick technology translates into tray space optimization as the entire surface is used, even when the items have different geometry, volumes or shapes. Moreover, thanks to the Modula warehouse dynamic tray height storage, the spaces between trays can be optimized and items and containers of different heights can be stored with great flexibility and efficiency.

Zero errors. No waste. Maximum efficiency.



More flexibility than ever!

OnePick trays can be fitted with special accessories, like partitions and dividers to organize the trays to store a number of different boxes and containers. Thanks to these accessories, the tray layout is incredibly flexible and easy to modify. The dynamic tray height storage combined with 1" tray adjustability allows for an optimized usage of the VML's internal cubic volume. At every material intake, the VLM controls the height of the material, checks the available spaces inside the warehouse and selects the perfect storage location in order to minimize the internal space waste.

No more unused space between the stored trays



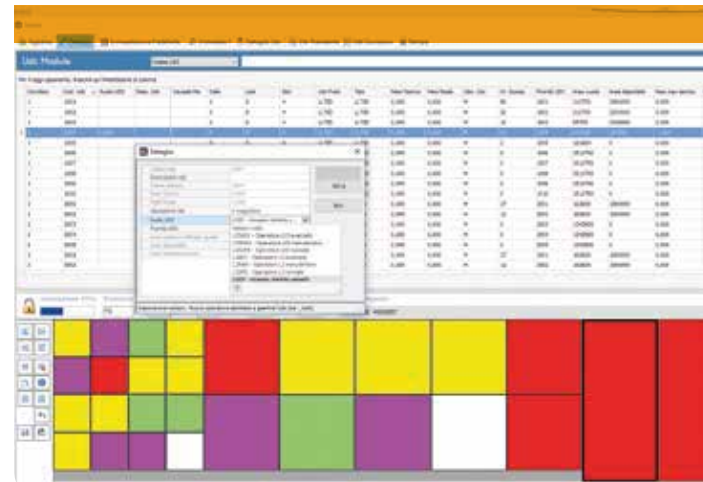
Like a smart vending machine

Smarter software

The OnePick combined with material handling systems, allows the installation of a VLM even in hard to reach, awkward areas, or areas far from the work station where the items are needed.

OnePick requires Modula WMS software which, among other functions, maps the products' location in the tray. The extractor device is guided by the defined mapping and automatically retrieves the selected items.

Any material handling system is then able to carry them to another even remote work station. Ideal for assembly lines, work stations, but also pick and pay or pick-up applications for e-commerce, self-service or take out and automated stores.



Our models

MA & MA-D



91.22 in

Model	Tray Width (in)	Tray Depth (in)	Tray Wall Height (in)	Net Tray Payload (lbs)	Unit Footprint (Width x Depth) (in)
MA25	74.80	25.75	1.77 / 2.75 / 4.72	551	91.22 x 136.69
MA25D	74.80	33.74	1.77 / 2.75 / 4.72	551	91.22 x 168.66
MA50	74.80	25.75	2.75 / 4.72	1,102	91.22 x 136.69
MA50D	74.80	33.74	2.75 / 4.72	1,102	91.22 x 168.66
MA75	74.80	25.75	2.75 / 4.72	1,653	91.22 x 136.69
MA75D	74.80	33.74	2.75 / 4.72	1,653	91.22 x 168.66
MA1000	73.23	25.75	4.72	2,200	91.22 x 136.69
MA1000D	73.23	33.74	4.72	2,200	91.22 x 168.66

MC & MC-D



114.84 in

Model	Tray Width (in)	Tray Depth (in)	Tray Wall Height (in)	Net Tray Payload (lbs)	Unit Footprint (Width x Depth) (in)
MC25	98.42	25.75	1.77 / 2.75 / 4.72	551	114.84 x 136.69
MC25D	98.42	33.74	1.77 / 2.75 / 4.72	551	114.84 x 168.66
MC50	98.42	25.75	2.75 / 4.72	1,102	114.84 x 136.69
MC50D	98.42	33.74	2.75 / 4.72	1,102	114.84 x 168.66
MC75	98.42	25.75	2.75 / 4.72	1,653	114.84 x 136.69
MC75D	98.42	33.74	2.75 / 4.72	1,653	114.84 x 168.66
MC1000	96.85	25.75	4.72	2,200	114.84 x 136.69
MC1000D	96.85	33.74	4.72	2,200	114.84 x 168.66

MX & MX-D



138.46 in

Model	Tray Width (in)	Tray Depth (in)	Tray Wall Height (in)	Net Tray Payload (lbs)	Unit Footprint (Width x Depth) (in)
MX25	122.05	25.75	1.77 / 2.75 / 4.72	551	138.46 x 136.69
MX25D	122.05	33.74	1.77 / 2.75 / 4.72	551	138.46 x 168.66
MX50	122.05	25.75	2.75 / 4.72	1,102	138.46 x 136.69
MX50D	122.05	33.74	2.75 / 4.72	1,102	138.46 x 168.66
MX75	122.05	25.75	2.75 / 4.72	1,653	138.46 x 136.69
MX75D	122.05	33.74	4.72	1,653	138.46 x 168.66
MX1000	120.47	25.75	4.72	2,200	138.46 x 136.69
MX1000D	120.47	33.74	4.72	2,200	138.46 x 168.66

ML & ML-D



177.83 in

Model	Tray Width (in)	Tray Depth (in)	Tray Wall Height (in)	Net Tray Payload (lbs)	Unit Footprint (Width x Depth) (in)
ML25	161.41	25.75	2.75 / 4.72	551	177.83 x 136.69
ML25D	161.41	33.74	2.75 / 4.72	551	177.83 x 168.66
ML50	161.41	25.75	4.72	1,102	177.83 x 136.69
ML50D	161.41	33.74	4.72	1,102	177.83 x 168.66
ML75	161.41	25.75	4.72	1,653	177.83 x 136.69
ML75D	161.41	33.74	4.72	1,653	177.83 x 168.66
ML1000	159.84	25.75	5.71	2,200	177.83 x 136.69
ML1000D	159.84	33.74	5.71	2,200	177.83 x 168.66

Modula Worldwide presence



Since 1988, Mainway has been providing clients with an unprecedented standard of excellence in conveyor design, material handling and systems integration. Our experienced team delivers leading-edge customizable solutions, embracing technology advancements to produce exceptional end results.

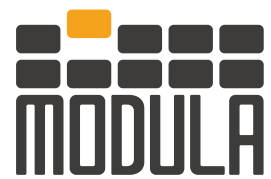
Mainway Handling Systems

Address: 3345 N Service Rd, Burlington, ON L7N 3G2

Email: sales@mainwayhandling.com

Phone: 905.335.0133

www.mainwayhandling.com



All information provided in this catalog is for informative purposes only and is not binding. Modula reserves the right to change information in this catalog at any time. Modula will not accept liability for or guarantee the accuracy of the information contained herein.